

INSTRUCTION FOR THE MOST DURABLE FOLDABLE VASE IN THE WORLD

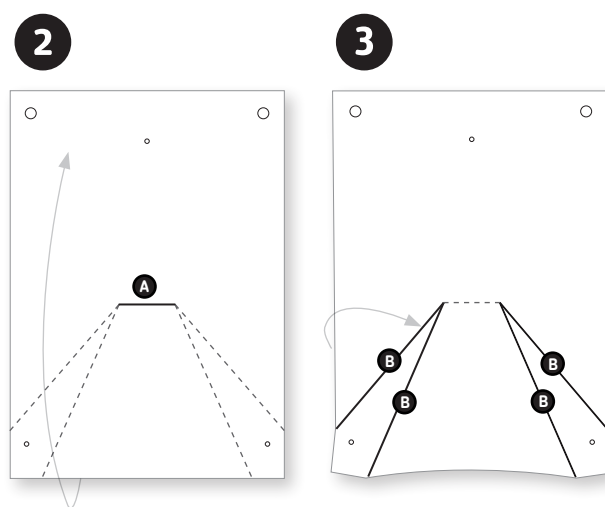
THE ART OF FOLDING

A DURABLE WALL VASE IN A FEW STEPS
SEE THE WEBSITE HENDRIK.NU FOR THE INSTRUCTIONAL VIDEO

A FOLDING VASE OF STONE

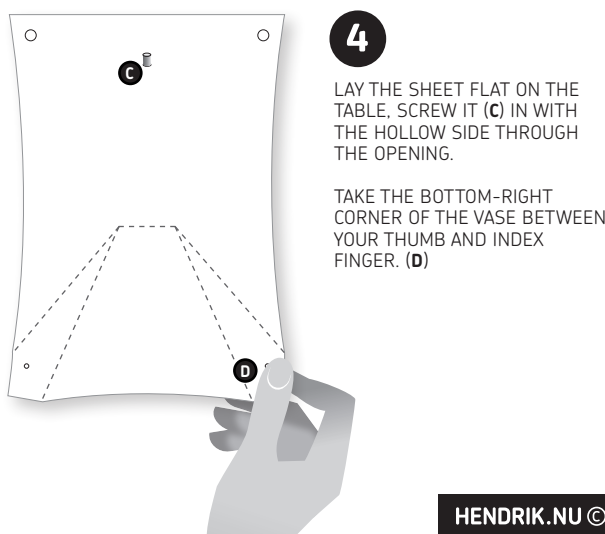
THIS FOLDING VASE IS MADE OF STONE PAPER. IT CONSISTS OF 80% CRUSHED STONE (CALCIUM CARBONATE) AND 20% RECYCLED HDP (A CLEAN PLASTIC CONSISTING OF CARBON AND HYDROGEN). DURING PRODUCTION, WATER AND ENERGY ARE HARDLY USED, SO IT HAS A VERY LOW CO2 EMISSION. IT IS FULLY WATER RESISTANT AND HAS A HIGH TEAR RESISTANCE. STONE PAPER ISO 14001:2004 CERTIFIED AND HAS THE C2C-SILVER CERTIFICATE.

1 TAKE THE UNFOLDED VASE OUT OF THE PACKAGING. ROLL IT OPEN AND LEAVE IT FLAT ON THE TABLE FOR A FEW HOURS, SO THAT THE VASE IS COMPLETELY FLAT AGAIN. ARE YOU IMPATIENT? :) THEN CAREFULLY PUT A BOOK ON IT.



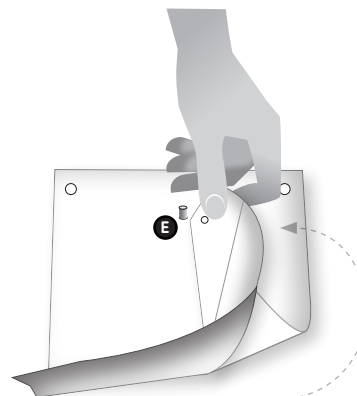
SET THE UNFOLDED VASE WITH (A) ON THE TOP, DOUBLE THE SHEET AND FOLD THE BACK SIDE OF THE VASE ONLY ON THE BLACK SHADED LINE.

TURN THE SHEET OVER, FOLD THE (B) FOUR DIAGONAL LINES, ALSO ON THE BACK SIDE, FROM OUTSIDE TO INSIDE.

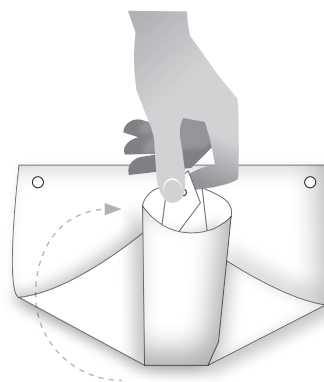


4 LAY THE SHEET FLAT ON THE TABLE, SCREW IT (C) IN WITH THE HOLLOW SIDE THROUGH THE OPENING.

TAKE THE BOTTOM-RIGHT CORNER OF THE VASE BETWEEN YOUR THUMB AND INDEX FINGER. (D)



5 TURN THE TIP INWARD AND UP AT THE SAME TIME, (E) RAISE THE POINT SO HIGH THAT THE HOLE ABOVE THE HOLLOW SCREW IS VISIBLE. PRESS THE SCREW THROUGH THE HOLE.

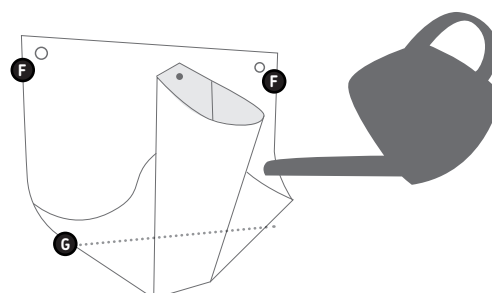


6 TURN THE BOTTOM LEFT CORNER IN THE SAME WAY TOWARDS THE INSIDE 5 TIMES AND PRESS THE SCREW THROUGH THE HOLE ON THE BOTTOM LEFT CORNER. TIGHTEN THE SCREW BY SECURING THE OTHER PART OF THE SCREW. PUSH ANY SMALL DENTS OUT AND THE WALL VASE IS READY.

HANGING THE WALL VASE WITH SUCTION CUPS

PUSH THE SUCTION CUPS, FROM THE BACK TO THE FRONT, THROUGH THE HOLES (F) WITH THE SUCTION PAD TO THE BACK. WET THE SUCTION CUPS, ON THE SIDE WHERE THEY ARE TO BE STUCK, PRESS THE SUCTION CUPS FIRMLY ONTO THE GLASS.

CAUTION: HANG THE VASE UP FIRST BEFORE YOU FILL IT WITH WATER. FILL THE VASE WITH WATER UNTIL THE STRIPE, SEE (G).



HENDRIK.NU ©

- TIPS**
- **HANGING TIPS** YOU CAN ATTACH THE VASE WITH 2 THUMB TACKS OR PINS ON A POSTER BOARD. ALSO WITH 2 SCREWS/NAILS IN THE WALL.
 - **GLASS** WET THE SUCTIONS CUPS BEFORE HANGING.
 - FOLD THE VASE ON A FLAT TABLE. MAKE SHARP FOLDS WITH YOUR FINGERS. DO NOT FOLD WITH HARD OBJECTS, THIS MAY CAUSE THE VASE TO LEAK.
 - READ THE INSTRUCTIONS CAREFULLY AT EACH STEP BEFORE YOU START FOLDING. YOU CAN ALSO WATCH THE INSTRUCTIONAL VIDEO ON HENDRIK.NU

CAUTION
THIS FOLDING VASE HAS A MAXIMUM USE GUARANTEE OF 12 MONTHS. THE MATERIAL OF THIS FOLDING VASE WILL BEEASILY DEGRADED UNDER THE INFLUENCE OF SUNLIGHT. IT WILL BEGIN CRACKING LIKE AN EGG SHELL IN THE OUTDOOR AIR AFTER A PERIOD OF 9 TO 12 MONTHS (IF THE VASE IS OUT IN THE SUN FOR TEN HOURS A DAY).